



20 x 20 Ocre and Crema



SEDONA

RECTIFIED PORCELAIN

SEDONA

TECHNICAL STANDARDS

Description	ASTM	ANSI	Result
Water Absorption	C-373	≤ 3%	≤ 0.5%
Break Strength (lbs.)	C-648	≥ 250 lbs	Min. 350 lbs
Scratch Hardness	MOH's Scale	N/A	7
Chemical Resistance	C-650	Unaffected	Unaffected
Frost Resistance	C-1026	Resistant	Resistant
Group	C-1027	N/A	4
Minimum Bond Strength (PSI)	C-482	≥ 50 lbs	165
Shade and Texture Rating	V	N/A	V2
Coefficient of Friction/ Dry	C-1028	Varies	≥ 0.65/0.75
Coefficient of Friction/ Wet	C-1028	Varies	≥ 0.60

AVAILABLE TRIM

Trim	Quarter Rd	QR Angle	V-Cap	VC Corner	Bullnose	BN Corner	Bullnose	Bullnose
Size	1 x 6 1/2	1 x 1	2 3/8 x 6 1/2	1 3/8 x 2 3/8	6 1/2 x 6 1/2	6 1/2 x 6 1/2	3 1/4 x 13	3 1/4 x 20
Nominal Size	(1 x 6 3/8)	(1 x 1)	(2 3/8 x 6 3/8)	(1 3/8 x 2 3/8)	(6 3/8 x 6 3/8)	(6 3/8 x 6 3/8)	(3 1/4 x 13)	(3 1/4 x 19 3/4)
Crema	RFSE320-A106	RFSE320-AC106	RFSE320-A8262	RFSE320-AC8262	RFSE320-S4669	RFSE320-SN4669	RFSE320-S43D9*	RFSE320-S43K9
Perla	RFSE321-A106	RFSE321-AC106	RFSE321-A8262	RFSE321-AC8262	RFSE321-S4669	RFSE321-SN4669	RFSE321-S43D9*	RFSE321-S43K9
Bambu	RFSE322-A106	RFSE322-AC106	RFSE322-A8262	RFSE322-AC8262	RFSE322-S4669	RFSE322-SN4669	RFSE322-S43D9*	RFSE322-S43K9
Ocre	RFSE323-A106	RFSE323-AC106	RFSE323-A8262	RFSE323-AC8262	RFSE323-S4669	RFSE323-SN4669	RFSE323-S43D9*	RFSE323-S43K9

* Available in '07

PRODUCT CHARACTERISTICS

- Excellent Scratch Resistance
- Superior Crack Tolerance
- Rustic Style

APPLICATIONS

- Ideal for Commercial/Residential Applications
- Wide Selection of Trim Pieces for Interior Decoration



Roca Tile Group



4244 Mount Pleasant St. NW, Suite 100, North Canton, OH 44720 / (800) 321-0684 / www.rocatilegroup.com

SERIEDONIA



20 x 20 Ocre and Crema

CREMA



20 x 20 (19^{3/4} x 19^{3/4})
RFSE320-20



13 x 13 (13 x 13)
RFSE320-13



6 1/2 x 6 1/2 (6 1/2 x 6 1/2)
RFSE320-6

PERLA



20 x 20 (19^{3/4} x 19^{3/4})
RFSE321-20

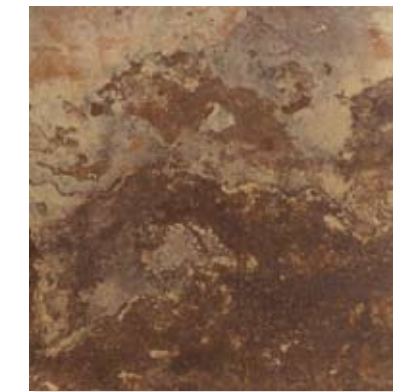


13 x 13 (13 x 13)
RFSE321-13



6 1/2 x 6 1/2 (6 1/2 x 6 1/2)
RFSE321-6

BAMBU



20 x 20 (19^{3/4} x 19^{3/4})
RFSE322-20

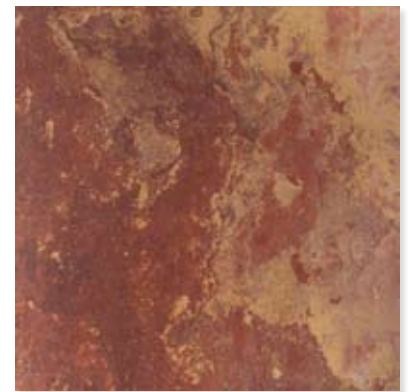


13 x 13 (13 x 13)
RFSE322-13



6 1/2 x 6 1/2 (6 1/2 x 6 1/2)
RFSE322-6

OCRE



20 x 20 (19^{3/4} x 19^{3/4})
RFSE323-20



13 x 13 (13 x 13)
RFSE323-13



6 1/2 x 6 1/2 (6 1/2 x 6 1/2)
RFSE323-6



• Sizes in () indicate nominal size.

Trim	Quarter Rd	QR Angle	V-Cap	VC Corner	Bullnose	BN Corner	Bullnose	Bullnose
Size	1 x 6 1/2	1 x 1	2 3/8 x 6 1/2	1 3/8 x 2 3/8	6 1/2 x 6 1/2	6 1/2 x 6 1/2	3 1/4 x 13	3 1/4 x 20
Nominal Size	(1 x 6 3/8)	(1 x 1)	(2 3/8 x 6 3/8)	(1 3/8 x 2 3/8)	(6 3/8 x 6 3/8)	(6 3/8 x 6 3/8)	(3 1/4 x 13)	(3 1/4 x 19 3/4)

• See back page for more details.